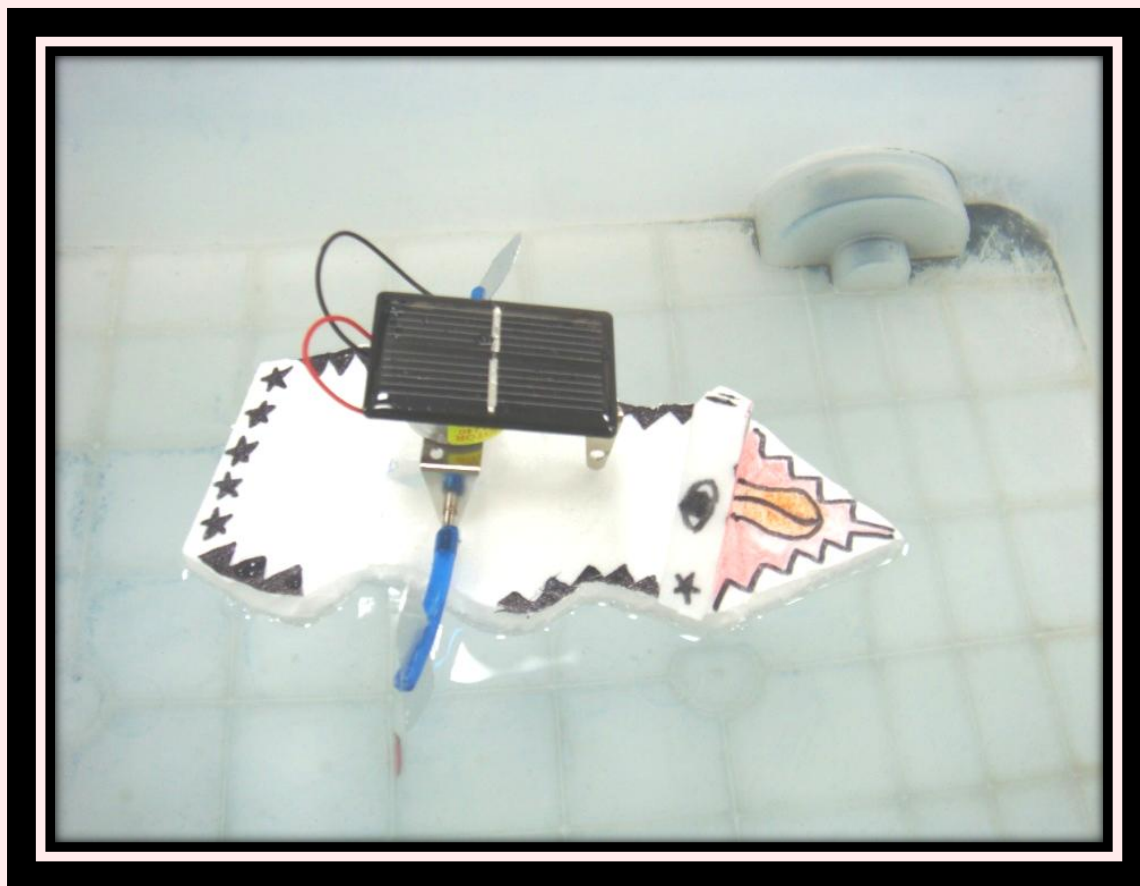
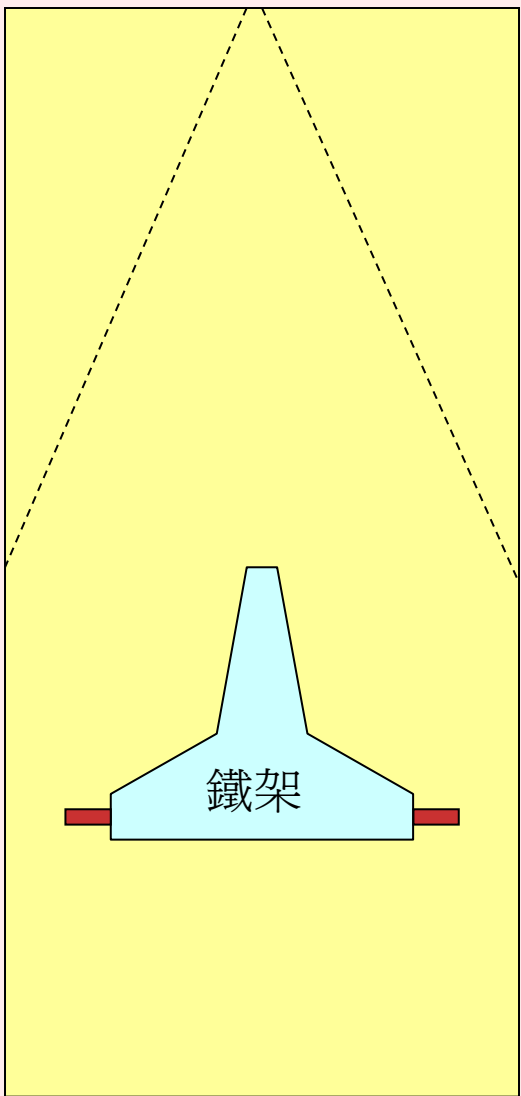


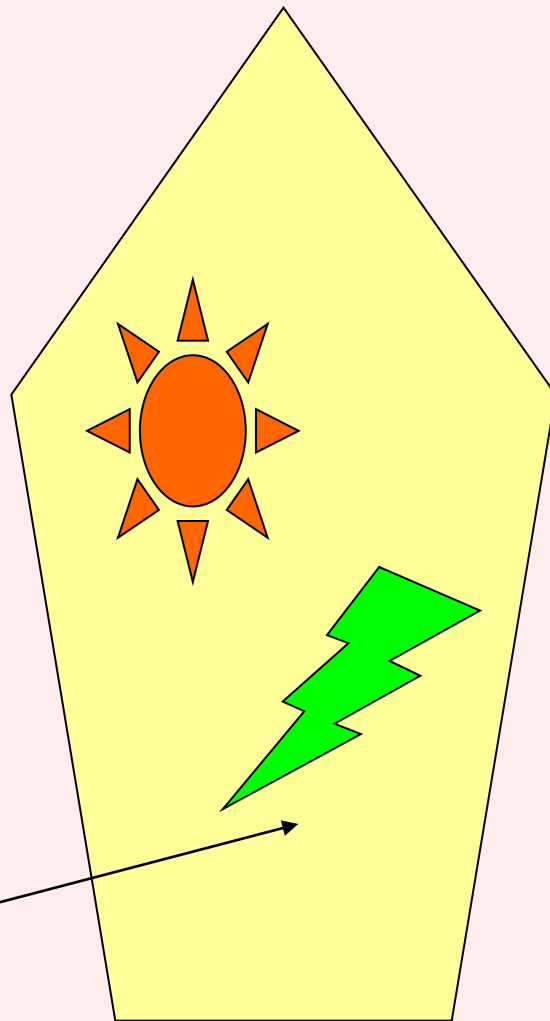
太陽能船製作



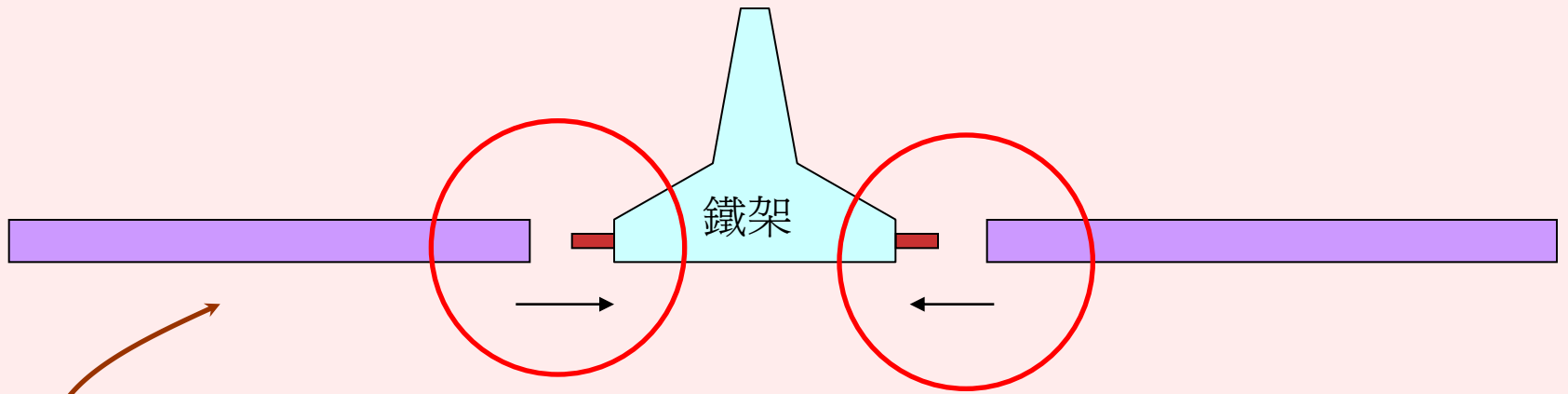
切割珍珠板



沿虛線切除

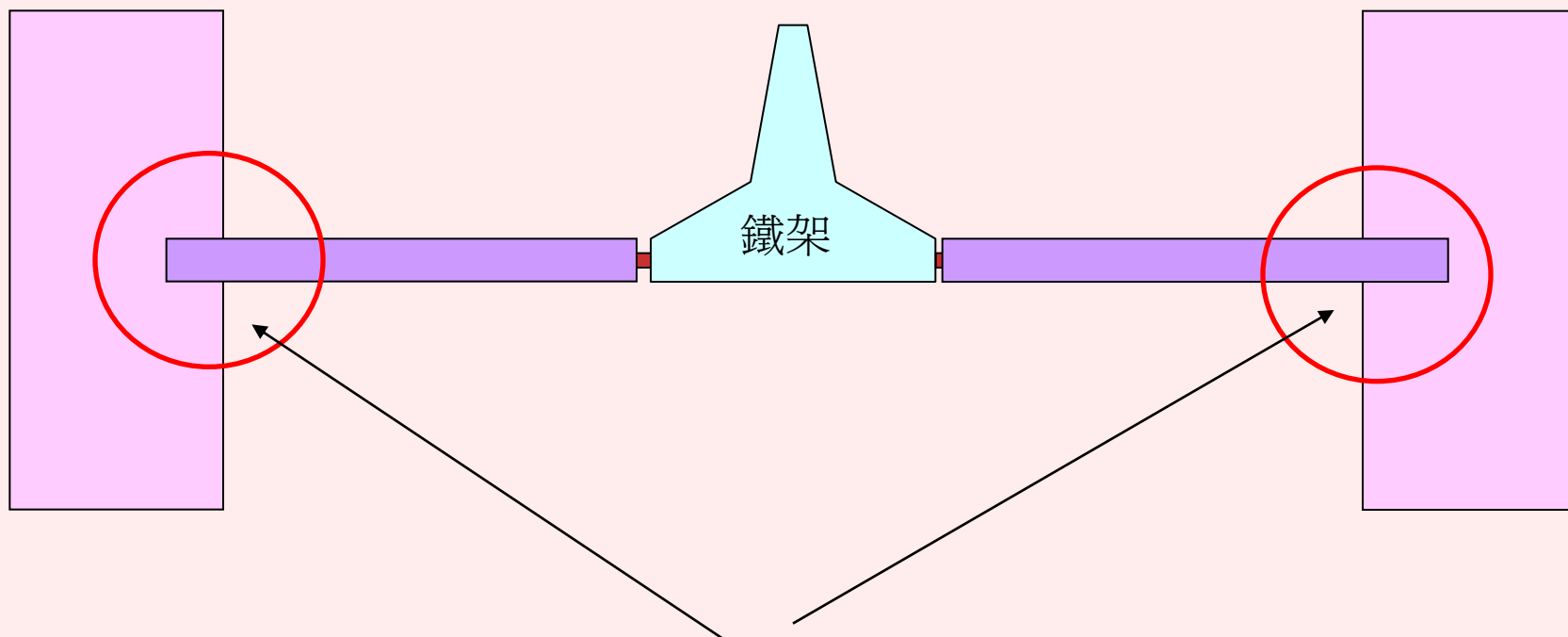


請畫上你喜歡的圖案

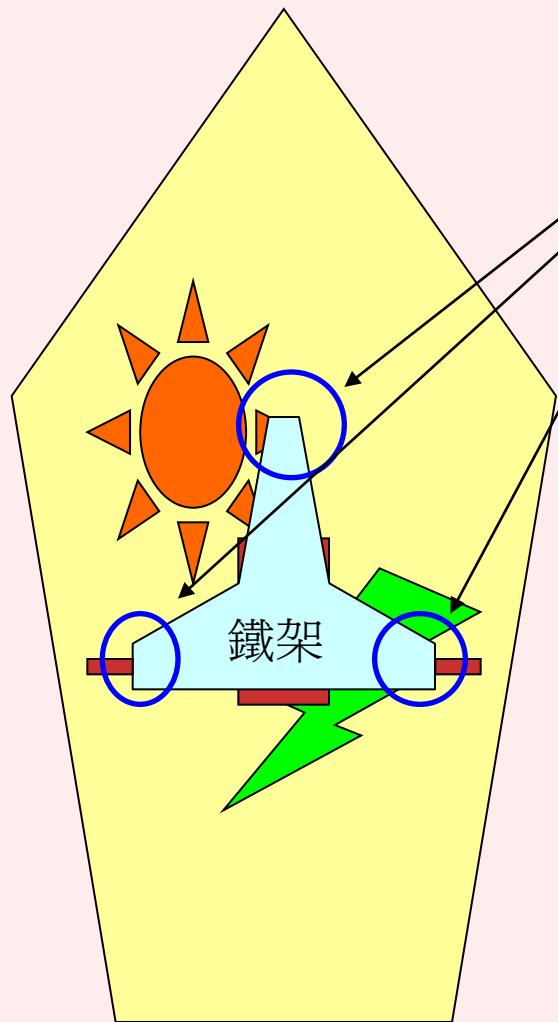


將軟管裝上鐵架兩邊突出的輪軸

將多餘的軟管剪除

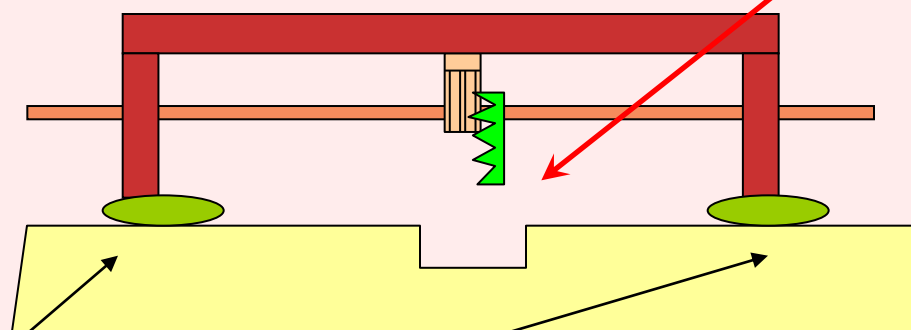


用熱溶膠槍將塑膠片粘在軟管上
(再次提醒熱溶膠槍使用注意)

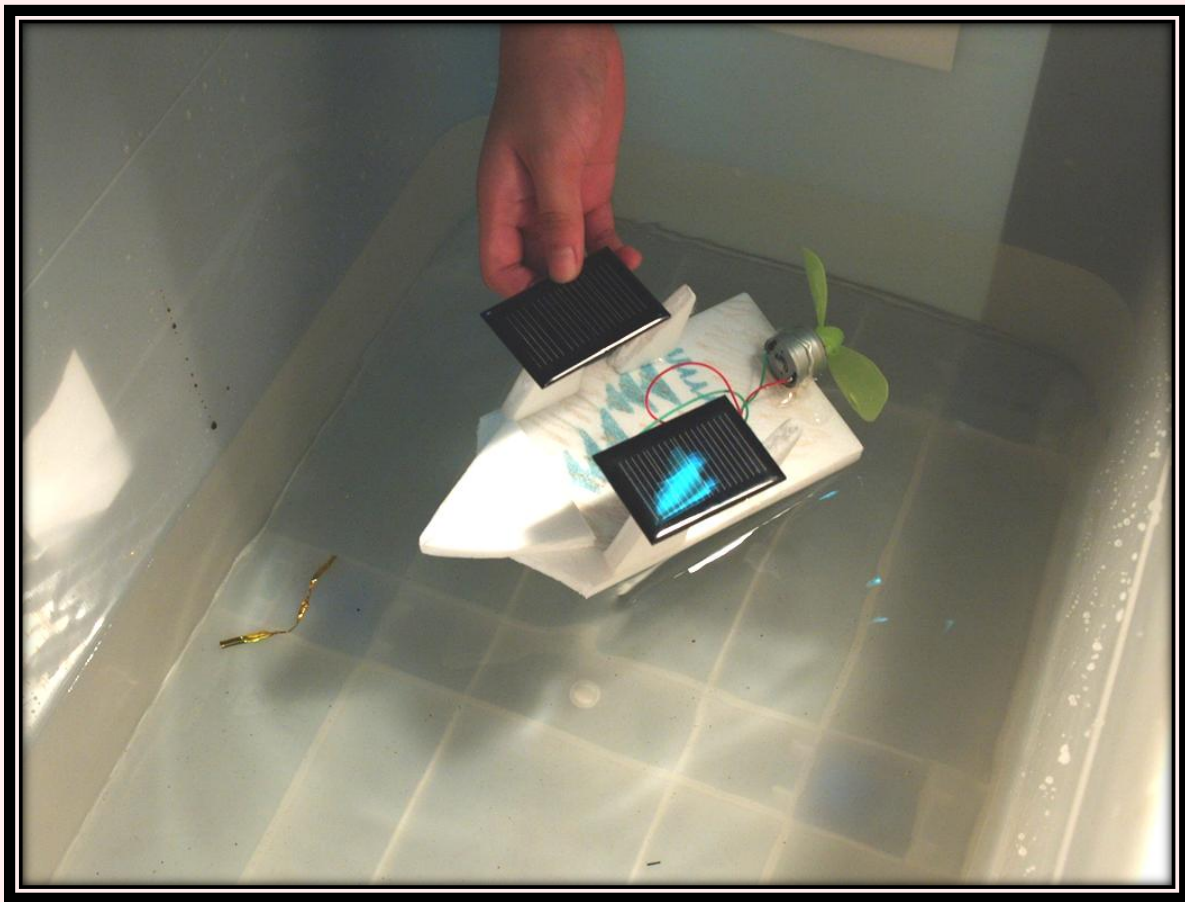


將鐵架黏在船體上

並且讓齒輪放在凹槽上



熱溶膠固定



請去測試你的船